

January 2021

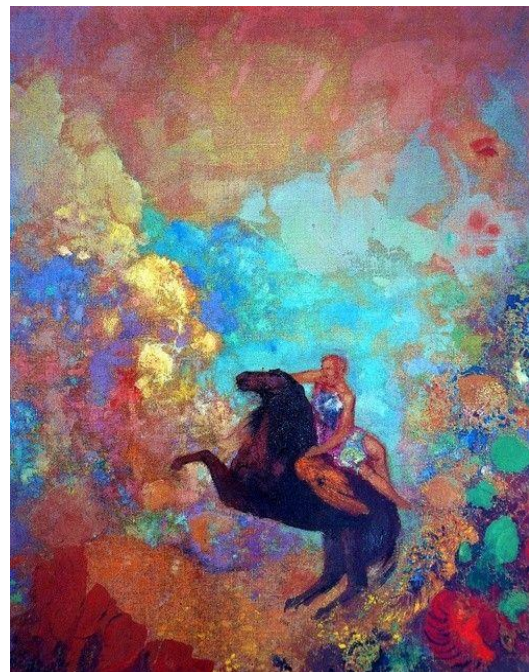
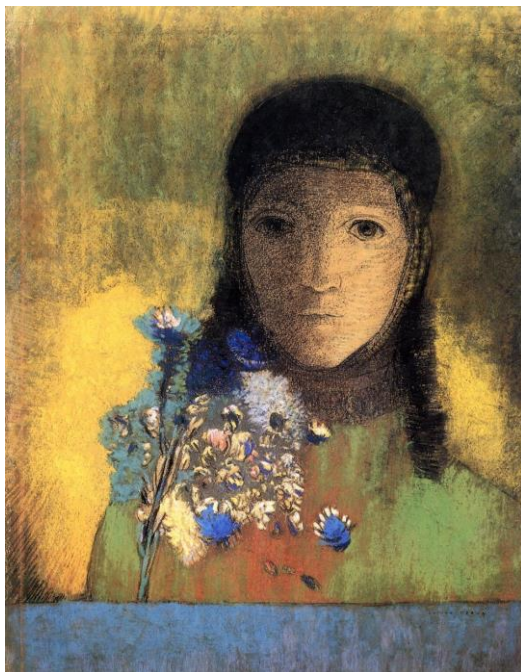
Sadly, for obvious reasons, no weekly meetings are possible at the moment. However, we are now hosting fortnightly zoom meetings for all members in order that we can motivate each other and keep thinking about our art. Grayson Perry is back on TV (channel 4) inspiring us to paint and submit our work to him with the ultimate aim of being part of his second Lockdown exhibition and some members are keen to have a go at this. Have a look at <https://www.graysonsartclub.com/submit-your-art> for more details.

Closer to home, we have a new plan to keep us challenged. At each zoom meeting, one member of the art group will nominate a painting or an artist that they feel inspired by. Those who wish to can then have a go at something in the style of this new artist and ideally, share their efforts with the rest of the group.

Painters and their paintings

Number 1 – nominated by Elaine Reed, Odilon Redon or Edgar Payne

Elaine started with Odilon Redon, a French post-impressionist/symbolist/ surrealist who works in pastel. His use of colours is incredible. Here are a couple of his works.



Elaine thought Odilon wouldn't be everyone's cup of tea and so found an artist called Edgar Payne (American contemporary of O R's) who's boat paintings seem to be strongly influenced by O R. The colours he used are also spectacular. There are a couple here. So if you prefer boats try copying/emulating one of his.



Contributions from members



Paul Bunyan (re last months' step by step 4)



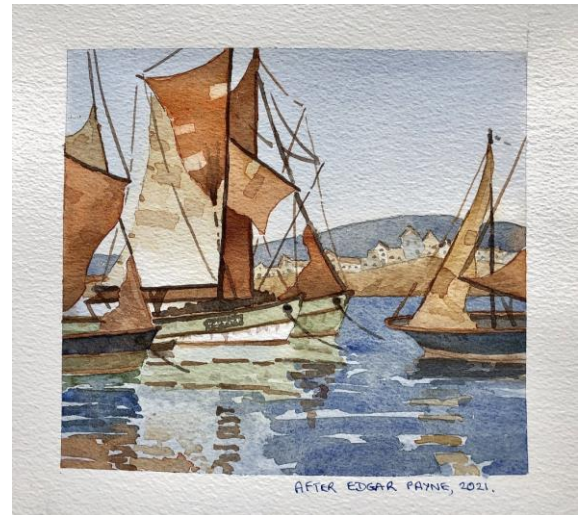
Jackier Hillier – based on work of Edgar Payne



Liz Haughton – based on work of Edgar Payne



Edgar original painting



Steve McIntyre's version



Odilon original painting



Liz Haughton's version



Odilon's original painting



Paul Bunyan's version



Liz Haughton's version



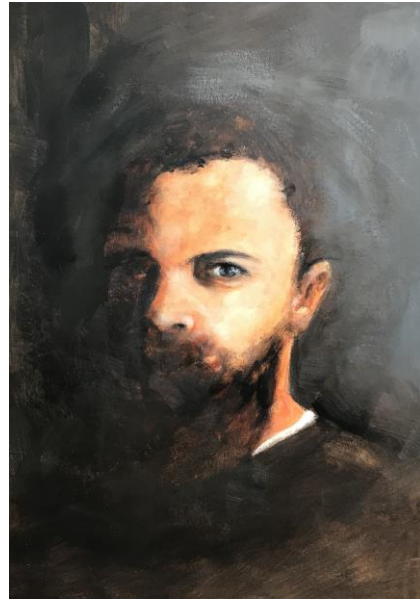
Odilon's original painting



Phil Newton's version



Odilon's original painting



Chris Lewis' version



Odilon's original painting



Elaine Reed's version



Odilon's original painting



Elaine Reed's version



Odilon's original painting



Tania Wilkie's version



Edgar's original painting



Ian Pile's version



Bron Stubbington – based on the work of Edgar Payne